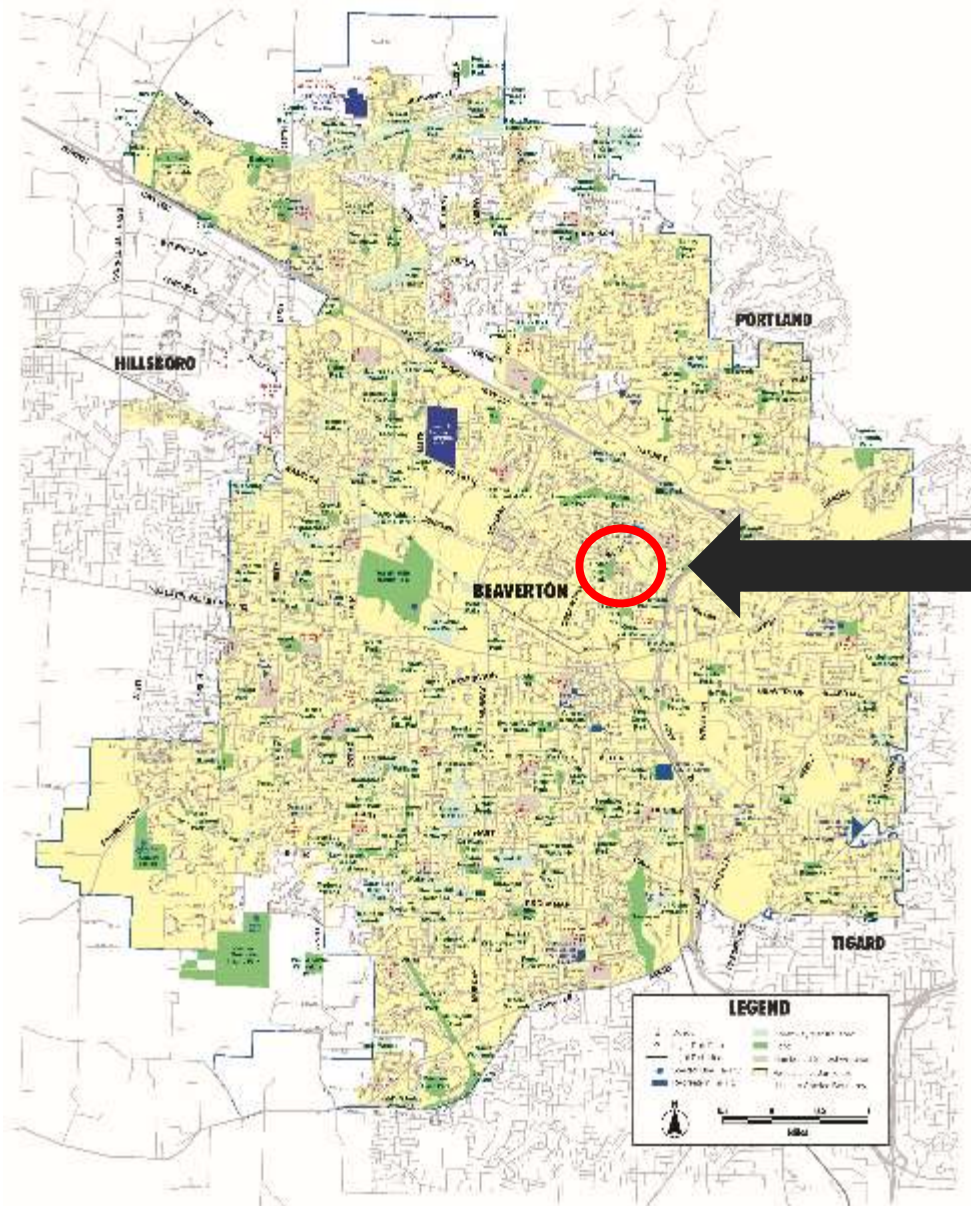


MOVING CARS, BUSES & PEOPLE

at Cedar Hills Park & William Walker Elementary School

Joint Transportation Improvement Proposal
Neighborhood Meeting – March 30, 2016

WELCOME



**Cedar Hills Park
& William Walker
Elementary School**

MEETING AGENDA

1. Welcome
2. Background of Projects
3. Cedar Hills Park Master Plan
4. William Walker Elementary School Design
5. Best Practices for Student Movements
6. Viable Circulation Options
7. Next Steps
8. **Your Feedback - Access & Circulation Option Stations**

BACKGROUND OF PROJECTS

WILLIAM WALKER ELEMENTARY SCHOOL

- Third Use of Prototype Design
- Adapted to the William Walker Site
- Strong Connection to Cedar Hills Park
- Demolition begins June 2017
- New School Completed September 2018
- Students and Staff at Timberland 2017-18

BACKGROUND of PROJECTS

CEDAR HILLS PARK

- Public meeting in August 2014
- Transportation and field size concerns heard
- Partnership needed between THPRD and BSD

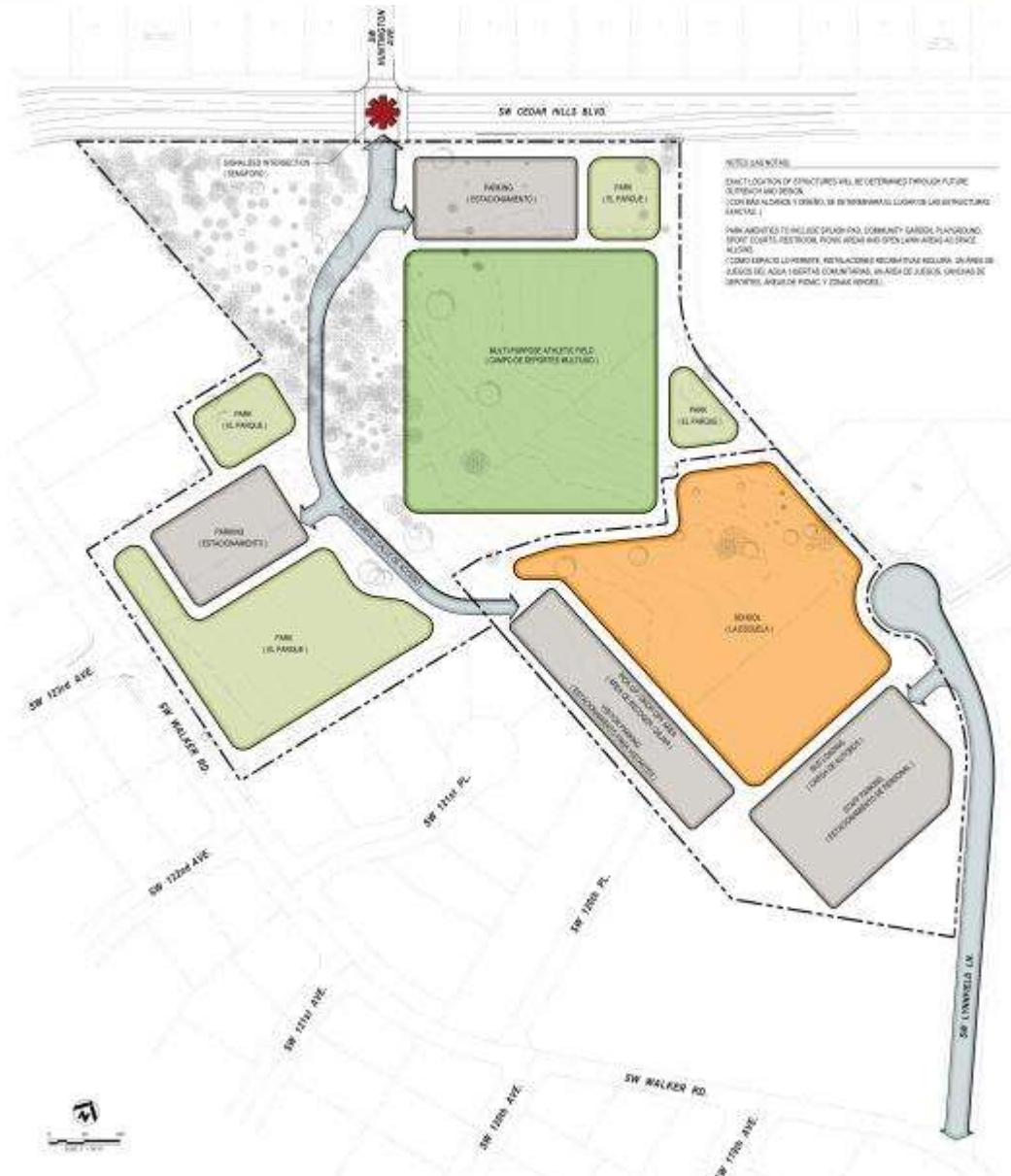
AUGUST 2014 MASTER PLANS



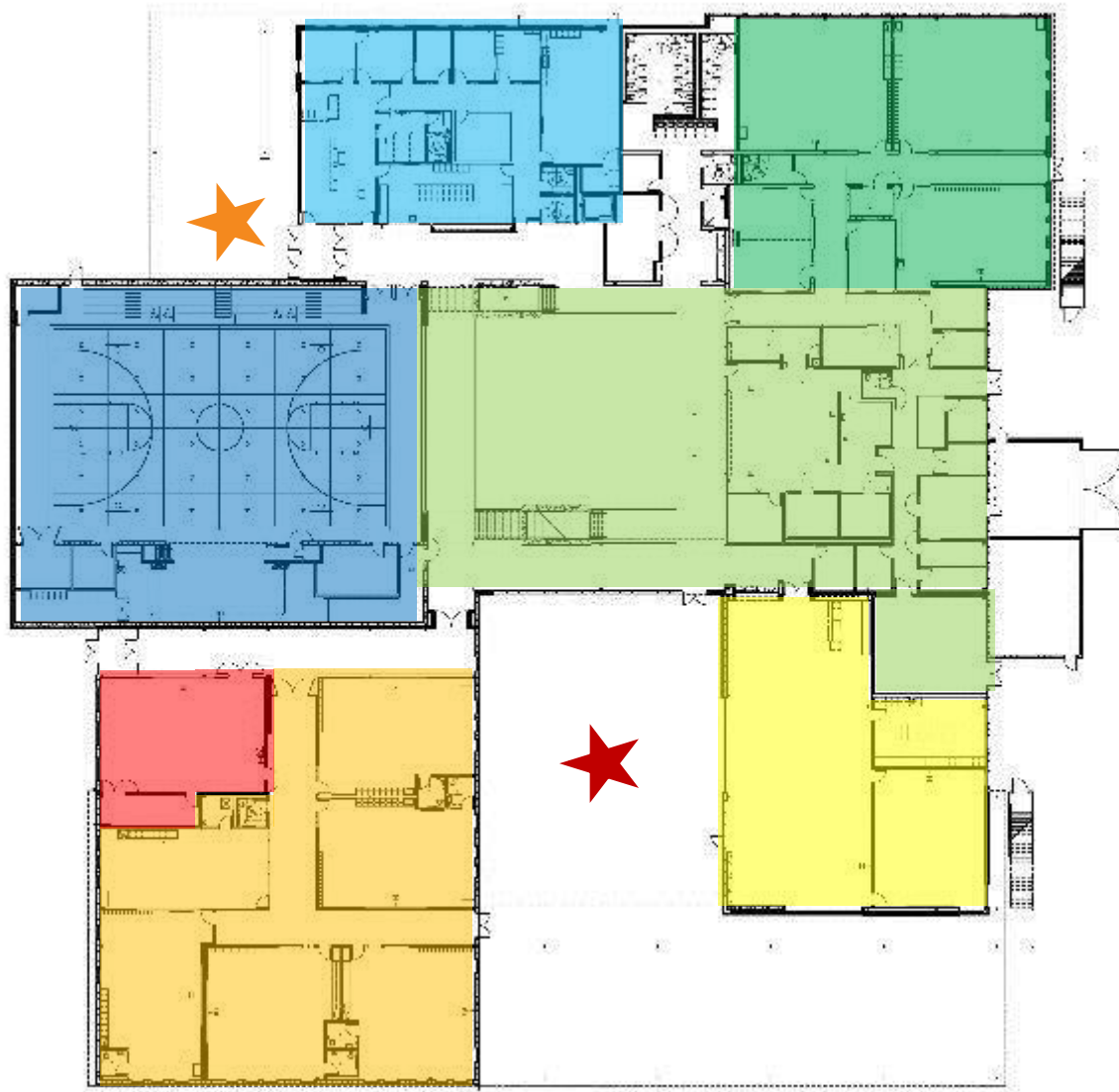
TRAFFIC IMPACT ANALYSIS UPDATES



SHARED ACCESS PLAN



SCHOOL DESIGN OVERVIEW



FIRST FLOOR (zones)

Entry

Gymnasium

Commons / Kitchen / Services

Media Center / Computer

Kindergarten Classrooms

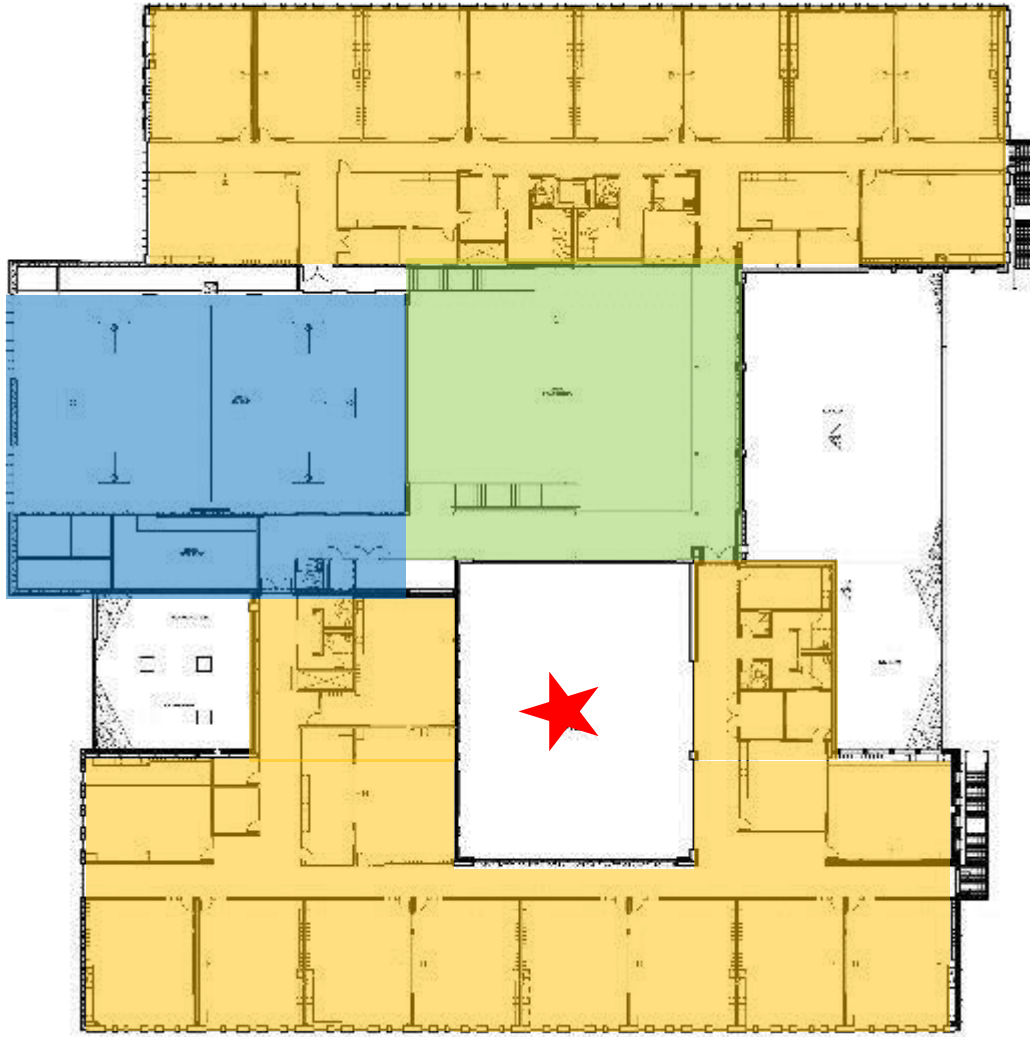
Special Education

Offices and Support

Music

Outside Open & Covered
Courtyard

SCHOOL DESIGN OVERVIEW



UPPER FLOOR (zones)

Gymnasium (below)

Commons (below)

Classrooms / Grade Flex Commons

Courtyard (below)

SCHOOL DESIGN OVERVIEW

SCHOOL FLY-AROUND

Student Movements

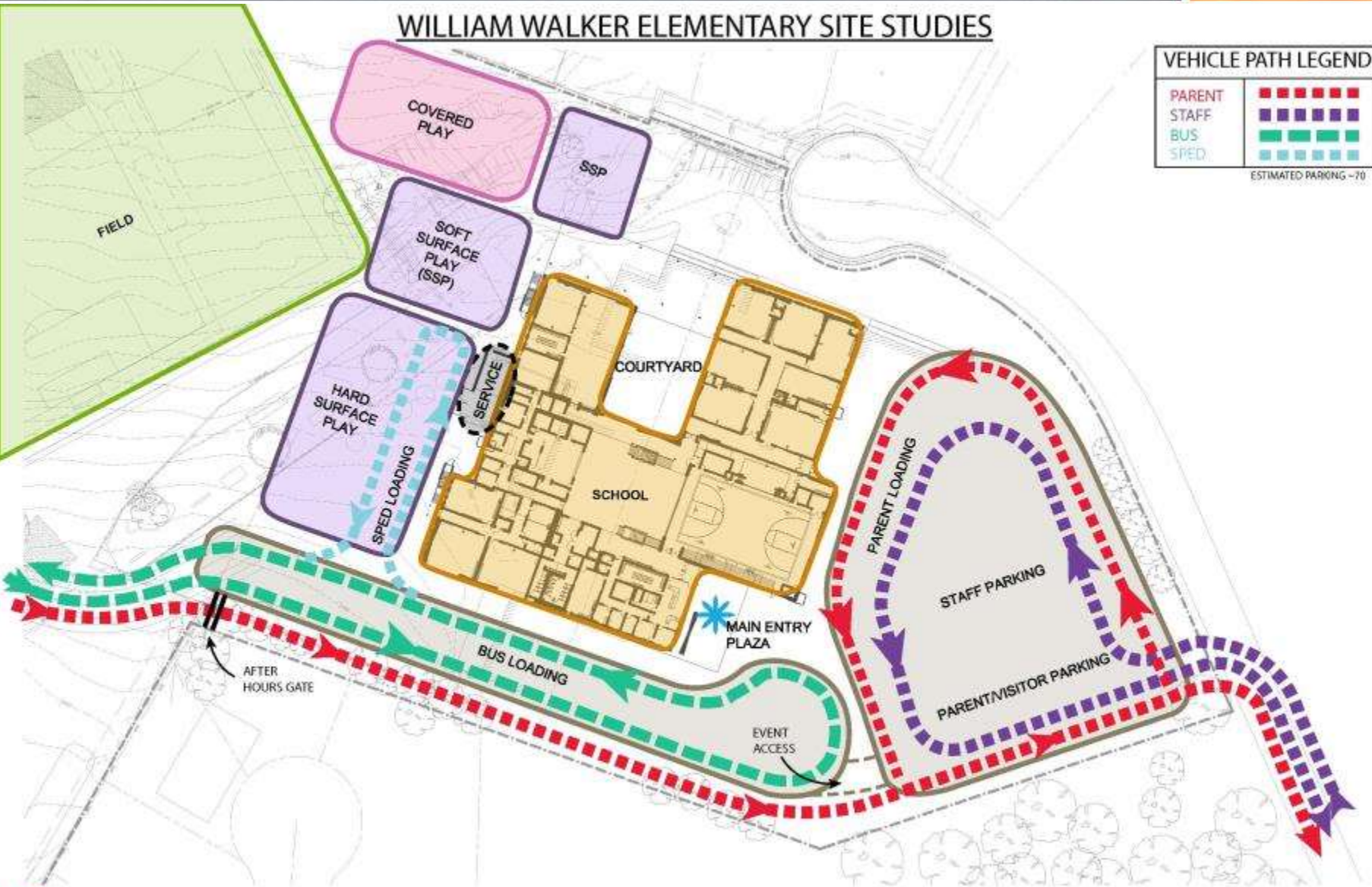
- Strong pedestrian links onto and around site
- Separate bus and parent traffic patterns
- Do not have students cross between cars or buses
- Provide close proximity between special education classes and their buses
- Clear lines of sight to outdoor activity areas

VIABLE CIRCULATION OPTION - E

WILLIAM WALKER ELEMENTARY SITE STUDIES

VEHICLE PATH LEGEND	
PARENT	Red dashed line with red arrows
STAFF	Purple dashed line with purple arrows
BUS	Green dashed line with green arrows
SPED	Light blue dashed line with light blue arrows

ESTIMATED PARKING ~70

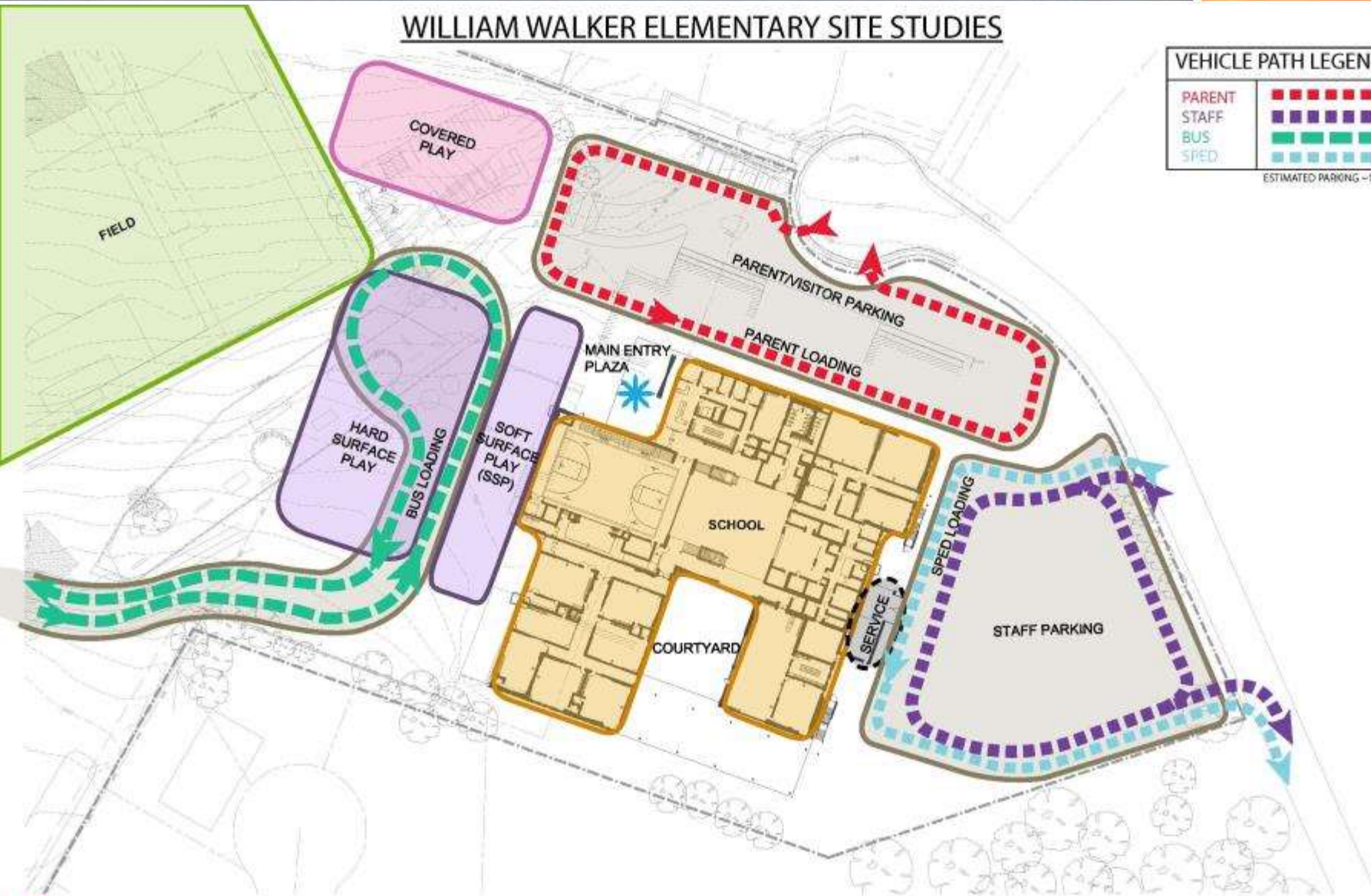


VIABLE CIRCULATION OPTION - F

WILLIAM WALKER ELEMENTARY SITE STUDIES

VEHICLE PATH LEGEND	
PARENT	
STAFF	
BUS	
SPED	

ESTIMATED PARKING ~125

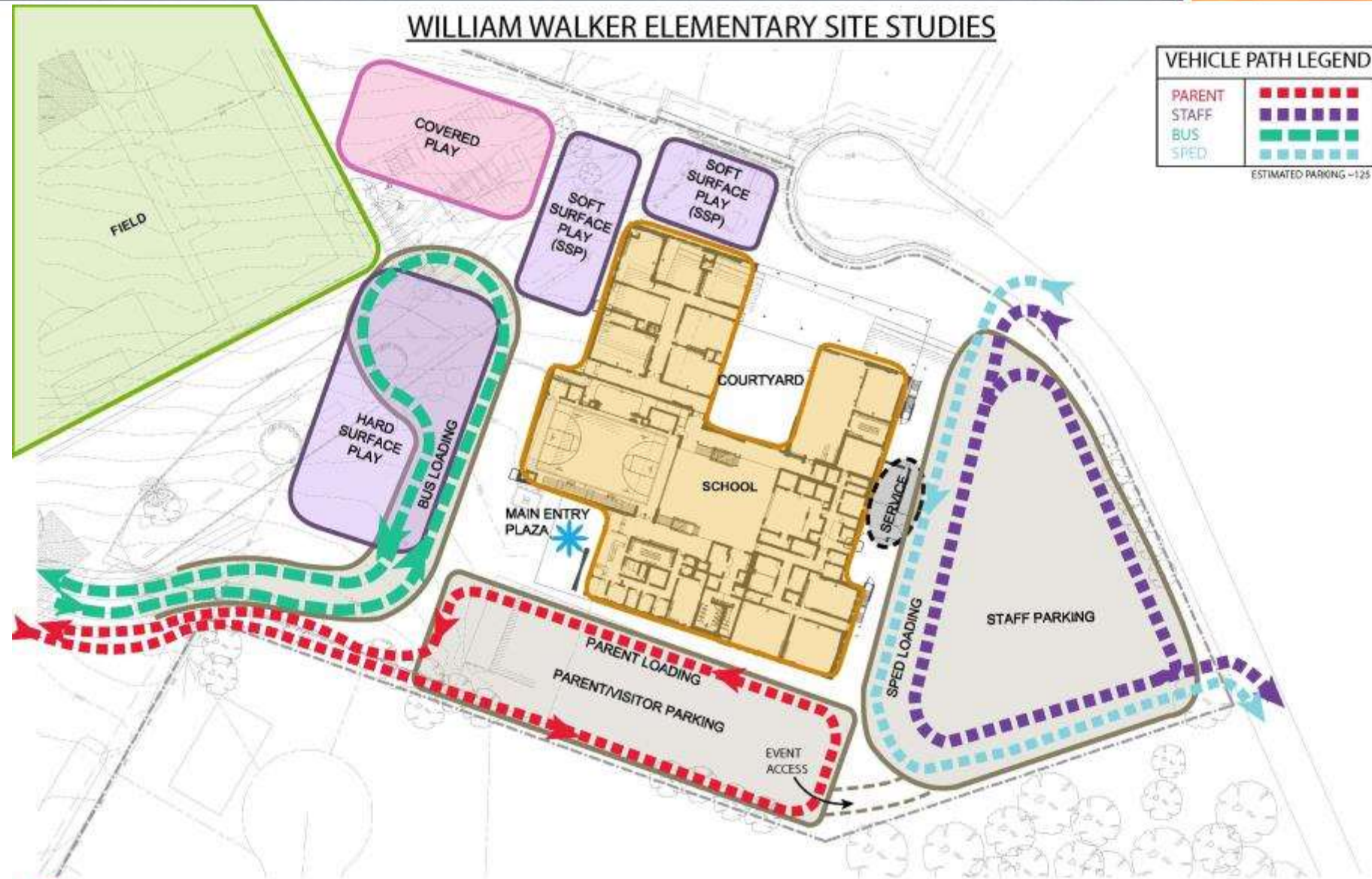


VIABLE CIRCULATION OPTION - G

WILLIAM WALKER ELEMENTARY SITE STUDIES

VEHICLE PATH LEGEND	
PARENT	Red dashed line
STAFF	Purple dashed line
BUS	Green dashed line
SPED	Light blue dashed line

ESTIMATED PARKING - 125



NEXT STEPS

- City & County Discussions to Develop Preferred Access Plan
- Neighborhood Meeting – Park (June 8, 2016 tentative)
- Neighborhood Meeting – School (Fall 2016)
- **Your Feedback – Access & Circulation Stations**