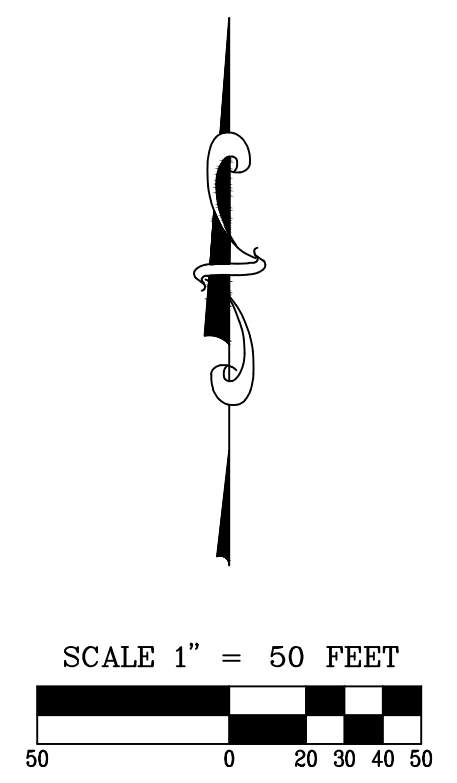
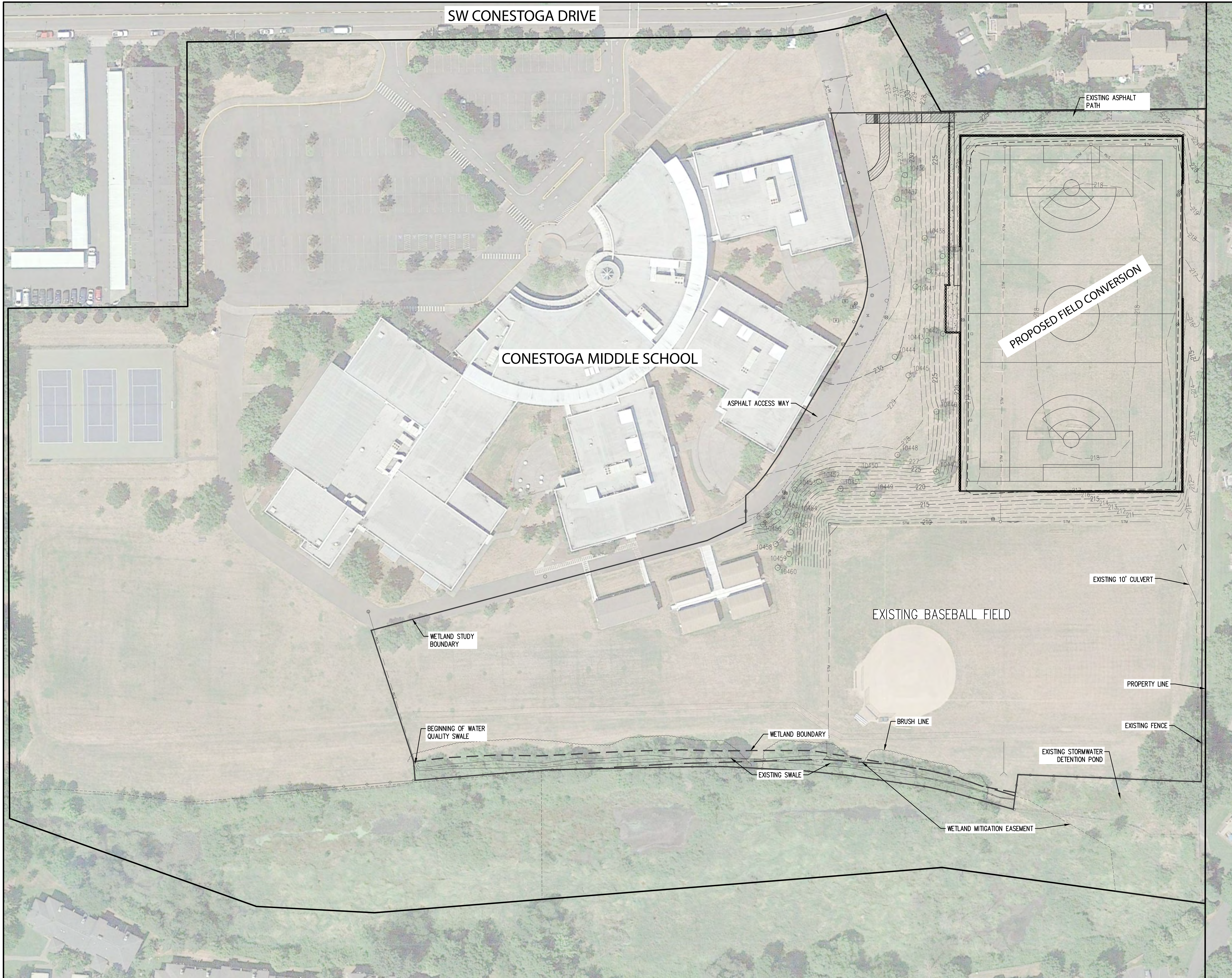


AKS DRAWING FILE: 4384_20150415 FIELD LAYOUT.DWG | LAYOUT: LAYOUT1 (2)



AKS
 AKS ENGINEERING AND FORESTRY, LLC
 12965 SW HERMAN RD
 SUITE 100
 TUALATIN, OR 97062
 PHONE: 503.563.6151
 FAX: 503.563.6152
 www.aks-eng.com

**CONESTOGA MIDDLE SCHOOL
 FIELD CONVERSION**

PRELIMINARY OVERVIEW SITE PLAN

DESIGNED BY:
 DRAWN BY:
 CHECKED BY: CEG
 SCALE: AS NOTED

REVISIONS

JOB NUMBER
4384