

SOMERSET WEST PARK PHASE 1 | NEIGHBORHOOD MEETING

September 28, 2017



PROJECT GOAL

Redevelop the well used and loved Somerset West neighborhood park to provide for year round use and amenities that are reflective of the needs and wants of the neighborhood.

NW 185th Avenue

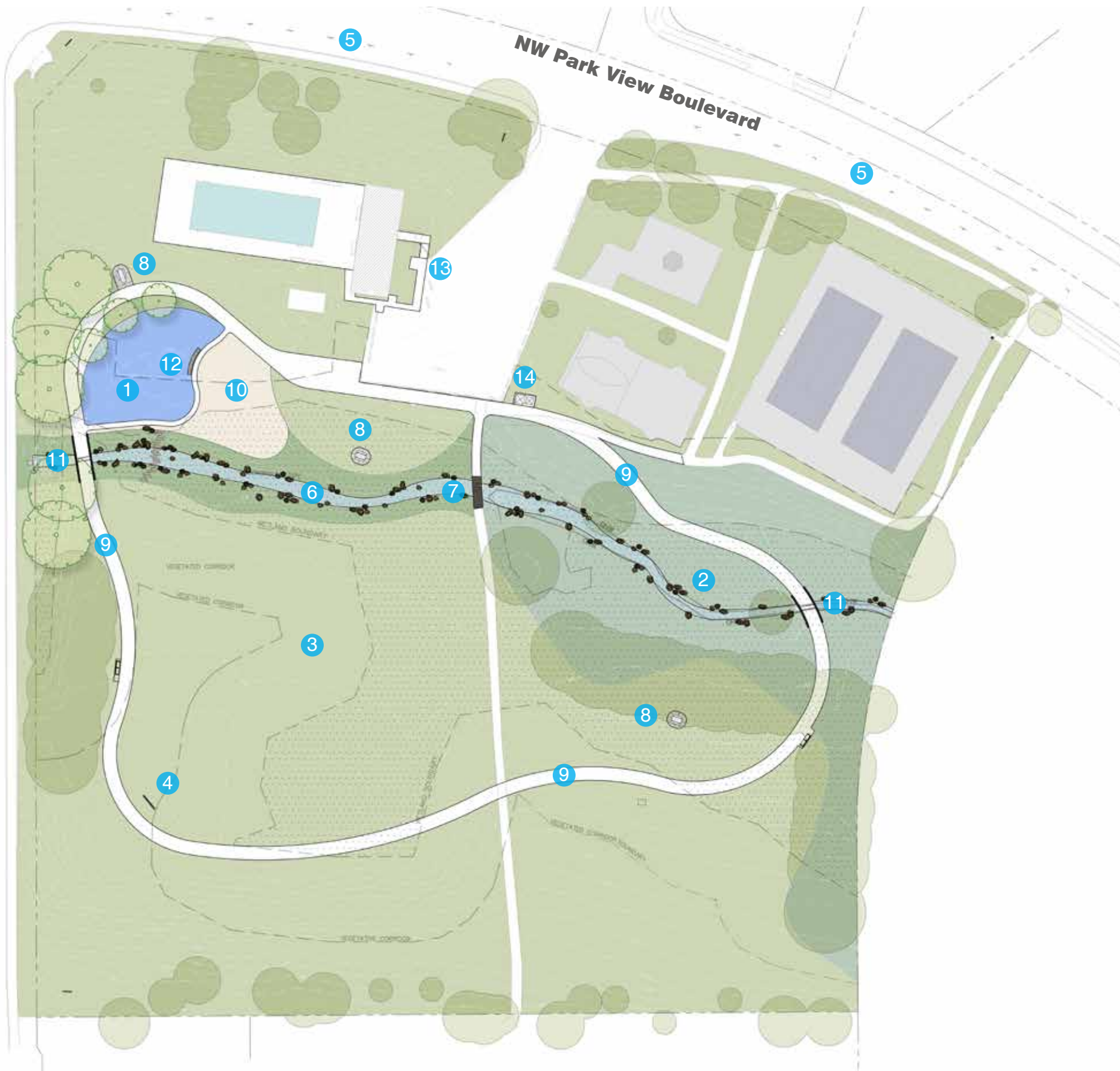
NW Park View Boulevard



- 1 Existing Pool House
- 2 Existing Pool
- 3 Traditional Play (2-12yrs)
- 4 Existing Creek to be Restored
- 5 Portable Enclosure
- 6 New Parking Lot
- 7 New Entry & Drop Off
- 8 Existing Tennis Courts
- 9 Wetland Area
- 10 Multi-Use Field / Open Space
- 11 Backstop
- 12 On Street Parking
- 13 Creek Daylighting
- 14 Wetland Boardwalk (Pedestrian)
- 15 Picnic Area
- 16 New Trees
- 17 8' Wide Paved Loop Path
- 18 Nature Play (All Ages)
- 19 Culvert
- 20 Terraced Seating
- 21 Wood Deck
- 22 Picnic Shelter
- 23 Bioswale at Parking Lot
- 24 1/2 Court Basketball
- 25 Log Bench

NW 185th Avenue

NW Park View Boulevard



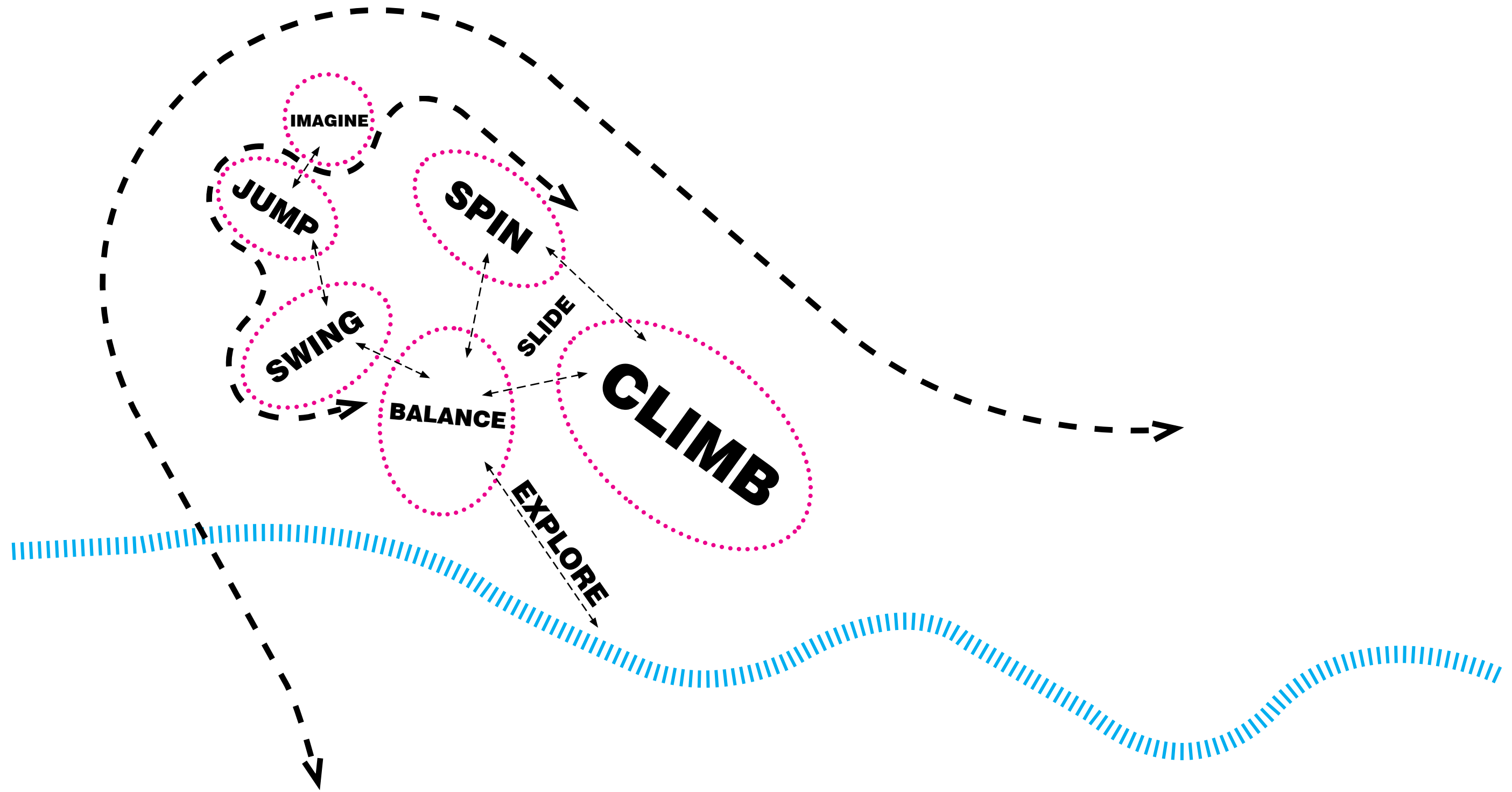
- 1 Traditional Play (2-12yrs)
- 2 Existing Creek to be Restored
- 3 Multi-Use Field / Open Space
- 4 Backstop
- 5 On-Street Parking
- 6 Creek Daylighting
- 7 Wetland Boardwalk (Pedestrian)
- 8 Picnic Area
- 9 8' Wide Paved Loop Path
- 10 Nature Play (All Ages)
- 11 Culvert
- 12 Log Bench
- 13 Drainage Improvements
- 14 Portable Enclosure

PRELIMINARY DESIGN CONCEPTS



- 1 Play Area
- 2 Loop Path
- 3 10' Backstop
- 4 Creek/Wetland Restoration
- 5 Picnic Pod
- 6 Portable Enclosure
- 7 Bench Seating
- 8 Culvert Crossing
- 9 Pedestrian Bridge
- 10 North/South Path
- 11 Entrance Terrace
- 12 Existing Parking Lot
- 13 Existing Pool House
- 14 Existing Pool
- 15 Existing Surge Tank
- 16 Existing Basketball Court
- 17 Existing Gazebo
- 18 Existing Tennis Courts





NW 185th Avenue



LEGEND

- 1 Play Area - Smarte
- 2 Play Area - Wood Chip
- 3 Boulder Scramble
- 4 Stair
- 5 Picnic Pod
- 6 Wetland/Creek Access
- 7 Seatwall
- 8 ADA Ramp
- 9 Loop Path
- 10 Culvert Crossing
- 11 Pedestrian Bridge
- 12 North/South Path
- 13 Entrance Terrace
- 14 Portable Enclosure
- 15 Existing Pool House
- 16 Existing Pool Deck
- 17 Existing Surge Tank
- 18 Existing Parking Lot

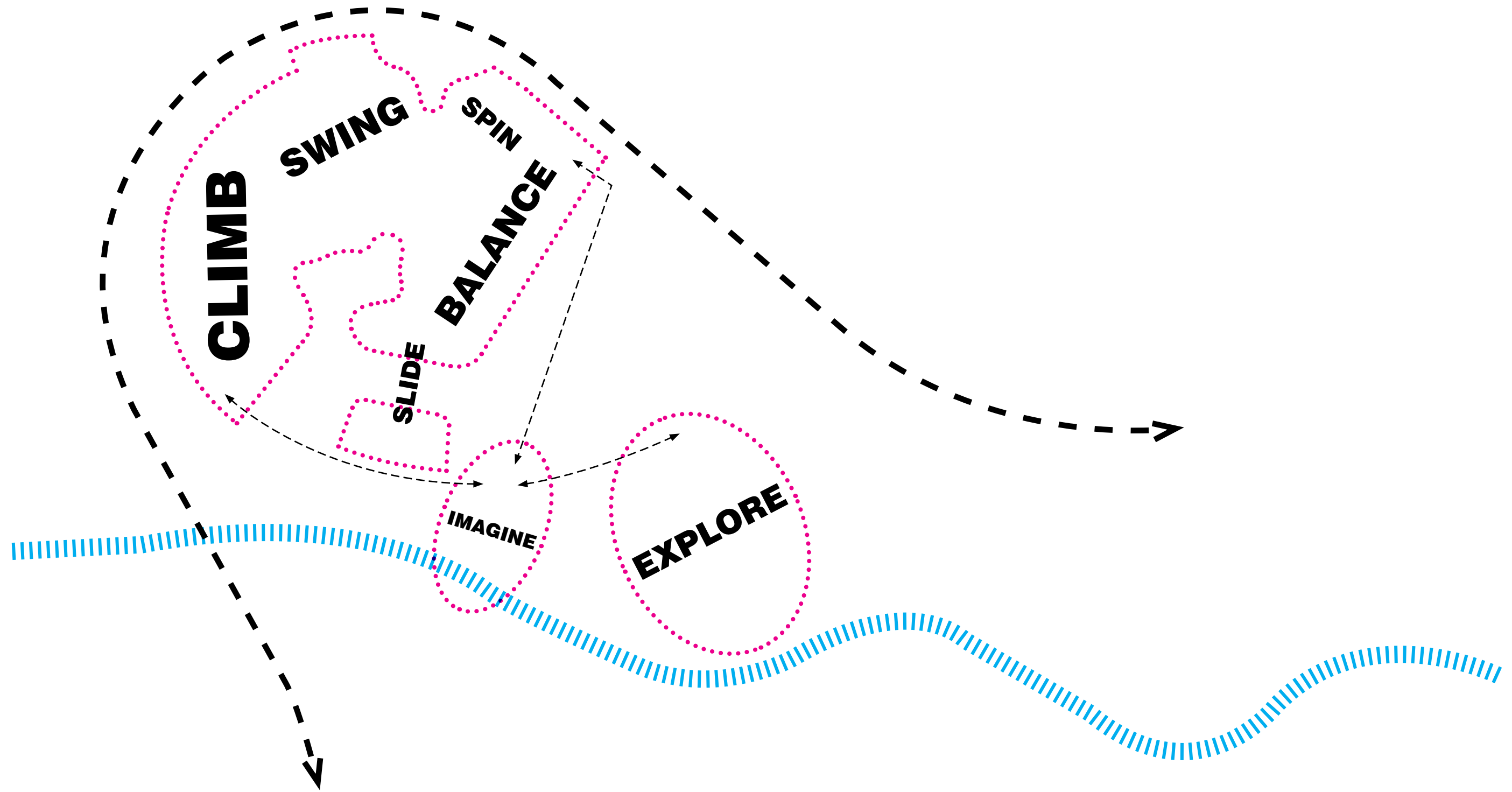
PLAY TYPES

- 1 Balance
- 2 Swing
- 3 Spin
- 4 Climb
- 5 Slide
- 6 Imagine
- 7 Jump



- 1 Play Area
- 2 Loop Path
- 3 10' Backstop
- 4 Creek/Wetland Restoration
- 5 Picnic Pod
- 6 Portable Enclosure
- 7 Bench Seating
- 8 Culvert Crossing
- 9 Pedestrian Bridge
- 10 North/South Path
- 11 Entrance Terrace
- 12 Existing Parking Lot
- 13 Existing Pool House
- 14 Existing Pool
- 15 Existing Surge Tank
- 16 Existing Basketball Court
- 17 Existing Gazebo
- 18 Existing Tennis Courts





NW 185th Avenue



LEGEND

- 1 Play Area - Smarte
- 2 Play Area - Mown Grasses
- 3 Boulder Scramble
- 4 Stair
- 5 Picnic Pod
- 6 Wetland/Creek Overlook
- 7 Seatwall
- 8 ADA Ramp
- 9 Loop Path
- 10 Culvert Crossing
- 11 Pedestrian Bridge
- 12 North/South Path
- 13 Entrance Terrace
- 14 Portable Enclosure
- 15 Existing Pool House
- 16 Existing Pool Deck
- 17 Existing Surge Tank
- 18 Existing Parking Lot

PLAY TYPES

- 1 Balance
- 2 Swing
- 3 Spin
- 4 Climb
- 5 Slide
- 6 Imagine

A photograph of a modern playground set in an urban environment. A silver metal slide is positioned diagonally across the frame, starting from a wooden platform with a black metal fence on the left and ending in a sandpit on the right. The sandpit is filled with light-colored sand and is bordered by large, dark grey rocks. In the background, a multi-story brick building with many windows is visible, partially obscured by lush green trees and bushes. A man in a blue shirt and a young child in a purple shirt are sitting on the sand in the bottom right corner. A black lamppost stands near the wooden platform. The text "THE GREAT PLAY DEBATE" is overlaid in white, bold, sans-serif font on the left side of the image.

THE GREAT PLAY DEBATE



COMPOSITE MATERIALS

VS



NATURAL MATERIALS



EXPANSE

VS



NOOKS AND EDDIES



MOVE THROUGH

VS



STAY

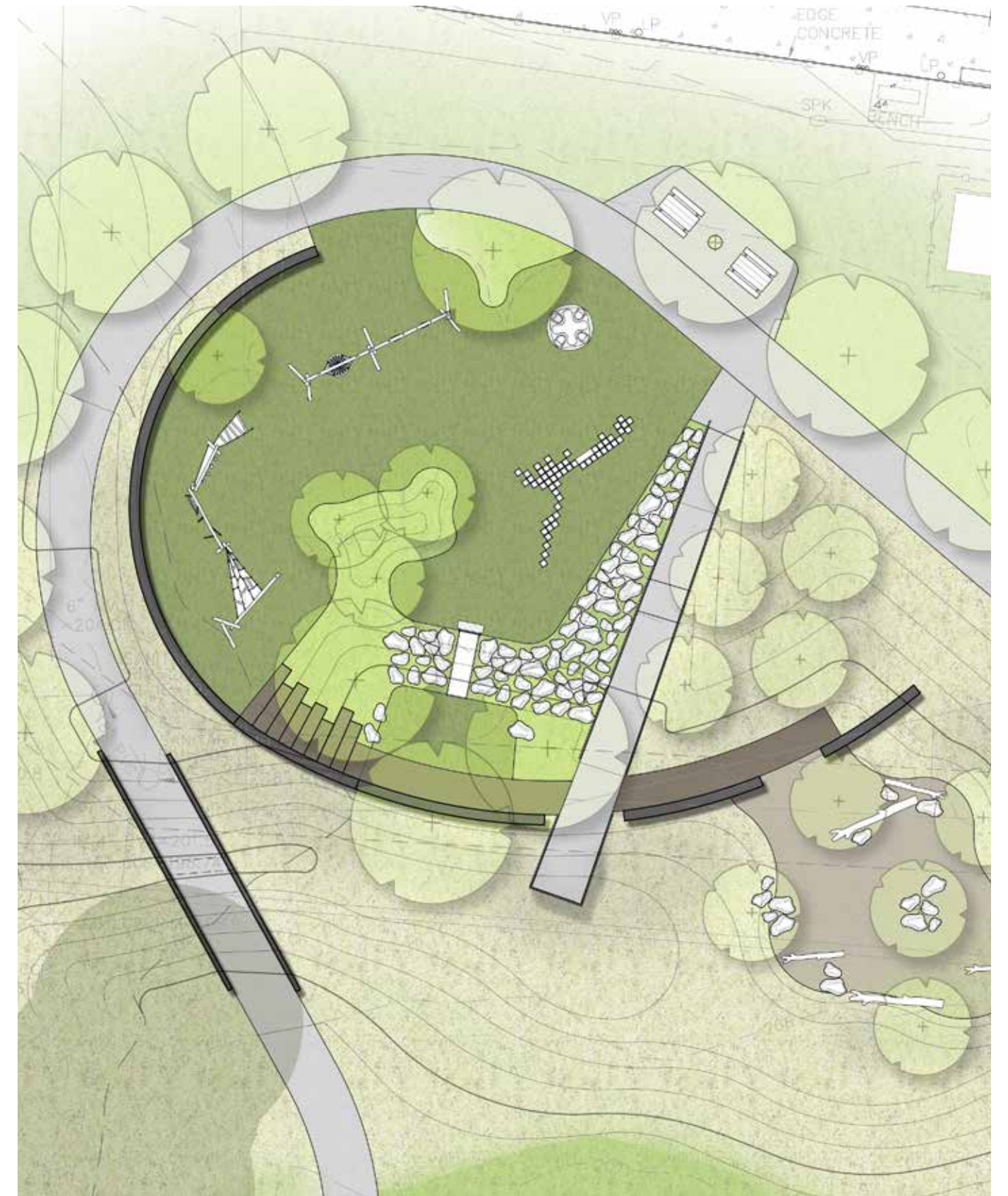
VS



OBSERVE



OPTION 1



OPTION 2

OPTION 1 AND 2



SWING



CLIMB



BALANCE



SPIN



SLIDE



EXPLORE AND IMAGINE



PLAY EXPERIENCES