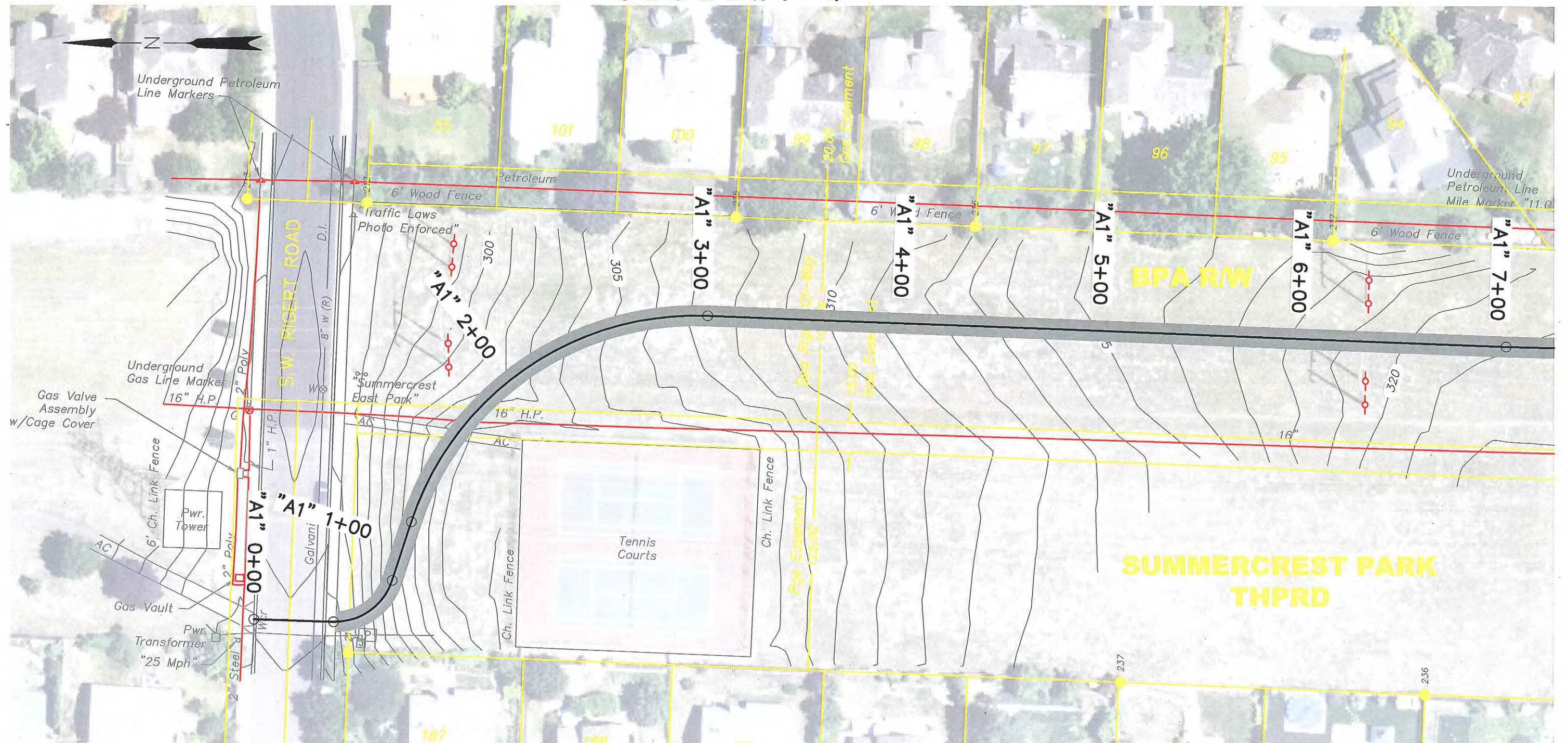


# SEGMENT 4



DAVID EVANS AND ASSOCIATES, INC.  
2100 Southwest River Parkway  
Portland Oregon 97201 Ph: 503.223.6663

## WESTSIDE TRAIL SEGMENTS 1, 4, AND 7

Reviewed By -  
Designed By - Scott Emmens  
Drafted By - Justin DeMello

PLAN  
SEGMENT 4

SHEET  
NO.  
4-1